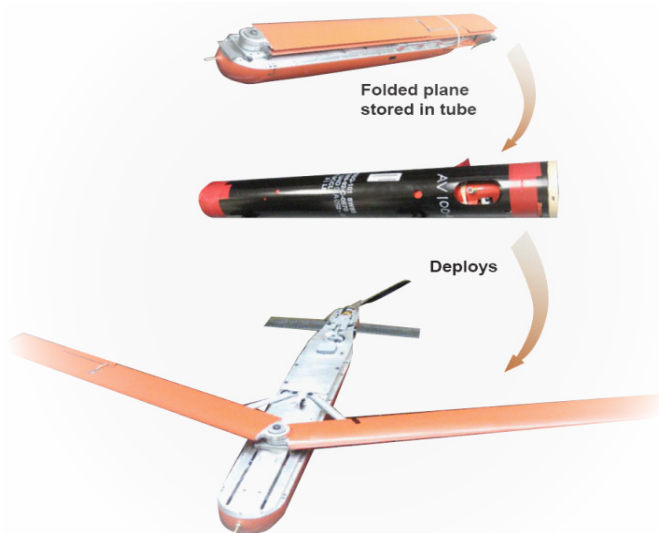


Unmanned Systems

CUTLASS TUBE-LAUNCHED UAS

WHEN THE MISSION MATTERS



The Cutlass is a tube-launched Small Unmanned Aircraft System capable of both air and ground launch from both 120mm and 150mm launch tubes.

KEY FEATURES

- Can be launched from 120mm and 150mm aircraft and ground launch tubes
Can be launched from surface vessels
- Payload options for ISR, targeting, and lethal missions
- Terminal engagement capability
- Integrated low light gimbal camera system



Teamed with Airborne Technologies, Inc.



Unmanned Systems

CUTLASS TUBE-LAUNCHED UAS

SPECIFICATIONS:

Dimensions

Wingspan 55.2 inches
Height 4.5 inches
Length 32.6 inches

Weights

Payload 3 lbs
Flight Weight 12-15 lbs

Performance

Max Air Speed 85 KEAS
Cruise 55-65 KEAS
Operational Endurance 1 Hour
Controlled Range 30 NM (RF)
Glide Ratio 10 : 1

Camera Specs

Resolution (Hi) 600 TV
 795(H) x 596(V)
Lux Max 0.0003
S/N Ratio Better than 45 dB
Auto Shutter 1/50sec - 1/100,000sec

Propulsion

Engine Type Hyperion
 Electric Motor
Propeller Graupner CAM, Folding

Avionics

Air Vehicle Assembly flightTEK SMC
Ground Station missionTEK

Data Links

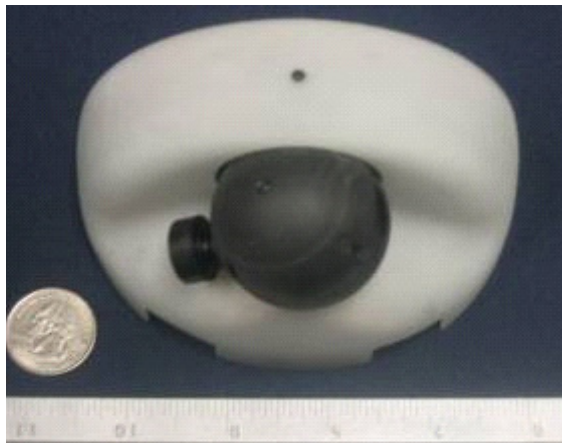
Primary Command Link 1W 902-928 MHz
Video Link 10W Analog 2.2-2.4 GHz
 2W Digital 2.4 GHz

Electrical System

Battery KoKam Lithium
 Polymer

Sensor / Payload

Low-light Ball Turret Camera
(steerable) +80/-120 deg. Azimuth range

Nose Camera:**Unmanned Systems
Headquarters**

4240 International Parkway
Suite 100
Carrollton, TX 75007
Tel: 469-568-2376
Fax: 469-568-2100

**Unmanned Systems
Production Facility**

9040 Glebe Park Drive
Easton, MD 21601
Tel: 410-820-7500
Fax: 410-820-8500

Web: www.L-3Com.com/UAS



Unmanned Systems

L-3. Headquartered in New York City, L-3 Communications is a prime contractor in aircraft modernization and maintenance, C3ISR (Command, Control, Communications, Intelligence, Surveillance and Reconnaissance) systems and government services. L-3 is also a leading provider of high technology products, subsystems and systems.